

# ARTWORK APPROVAL FORM

## ORDER DETAILS

ORDER NUMBER: X  
 ITEM CODE: CALECO-XD  
 QUANTITY: X  
 X: X  
 X: X

## COVER (A1)

TECHNIQUE: X  
 COLOUR: CMYK  
 SIZE: ALL OVER  
 X: X  
 X: X

## STICKY NOTES (C1/D1/E1/F1)

TECHNIQUE: X  
 COLOUR: X  
 SIZE: AS ARTWORK  
 PAPER TYPE: WHITE  
 X: X  
 X: X

## SHEETS (I1.1-I1.12)

TECHNIQUE: X  
 COLOUR: CMYK  
 SIZE: AS ARTWORK  
 X: X  
 X: X

## MARKERS (G.1-H.1)

TECHNIQUE: X  
 COLOUR: X  
 SIZE: X  
 REC. MARKERS: BLUE / YELLOW / PINK  
 X: X



SCALE 1:2

### GENERAL COMMENTS:

THE FINAL OUTCOME OF THE COLOURS WILL BE AFFECTED DEPENDING OF THE LAMINATION TYPE.

DUE TO THE NATURE OF FULL COLOUR PRINTING THE OUTCOME OF THE FINAL COLOUR RESULT CAN BE SLIGHTLY DIFFERENT IN A REAL SAMPLE.

WATERMARK EFFECT MIGHT BE DIFFERENT FROM EXPECTATION. THE FINAL EFFECT CAN BE TOO DARK OR TOO BRIGHT.

### ATTENTION:

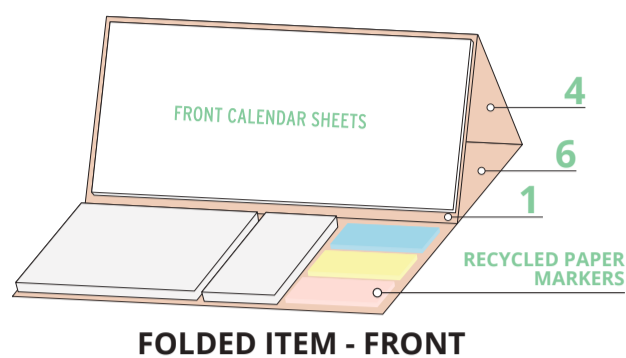
ALL IMPRINTS ON UNCOATED PAPER CAN BE A LITTLE SHINY.

DUE THE SURFACE OF ECO ITEM (BROWN PAPER) THE COLOUR RESULT MIGHT BE DIFFER FROM EXPECTATION, ESPECIALLY FOR VERY BRIGHT COLOURS.

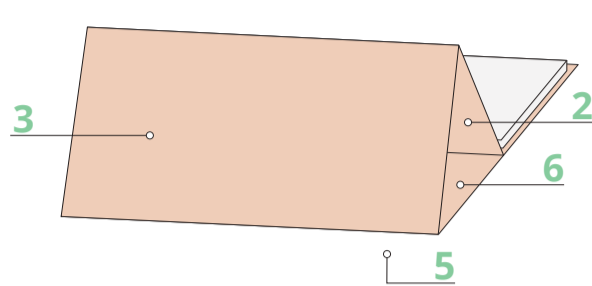
DUE THE MATERIAL AND PRODUCTION PROCESS ECO PRODUCTS DON'T INCLUDE ANY FINISHING.

DUE THE CRAFT MATERIAL OF ITEM, WHILE COVER PART IS BEING FOLD, THERE IS RISK OF WIPING PRINT OUT ON THE COVER EDGES. IT IS SUGGESTED TO KEEP PRINTING INSIDE SAFE PRINT AREA

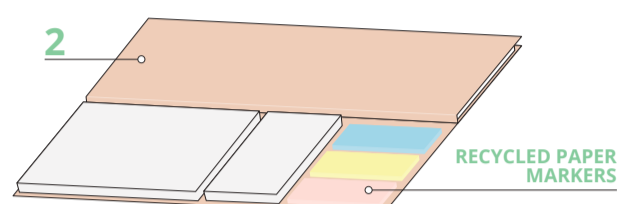
## SKETCH OF COMPONENT PLACEMENT



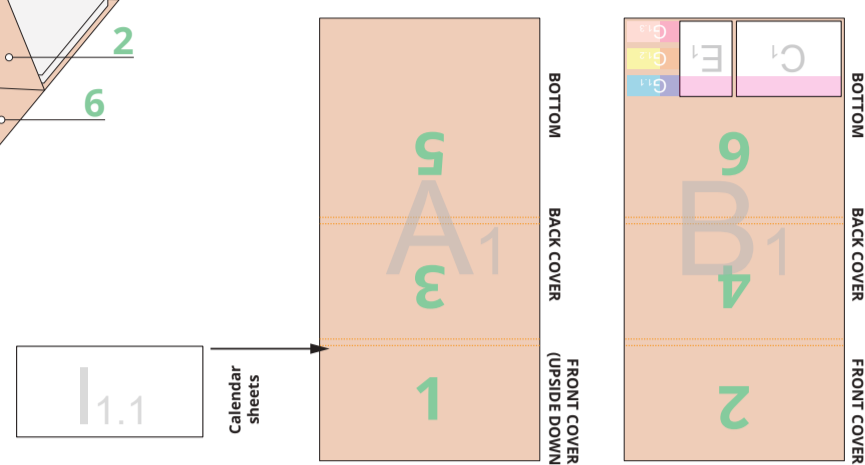
FOLDED ITEM - FRONT



FOLDED ITEM - BACK

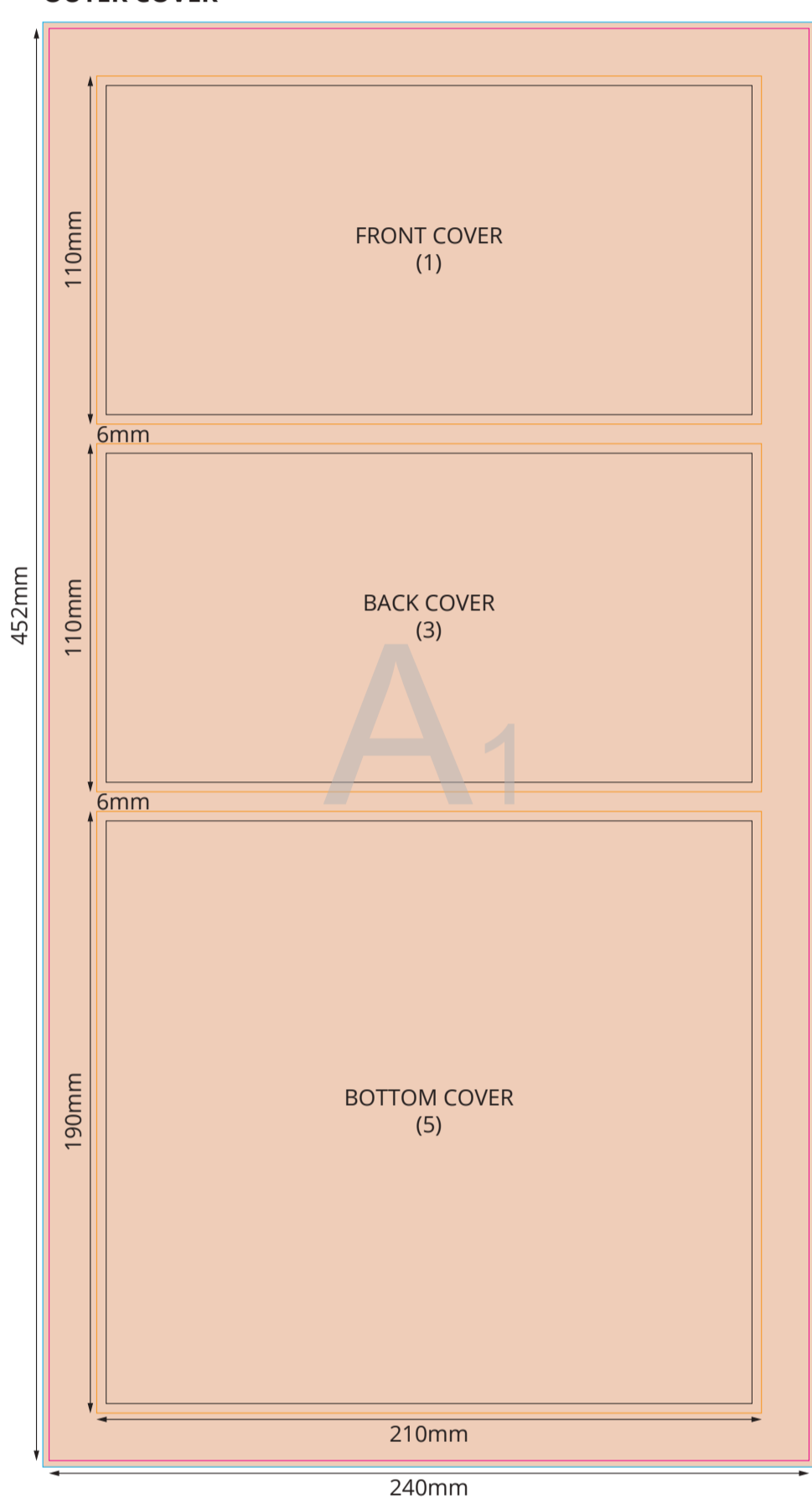


FOLDED ITEM

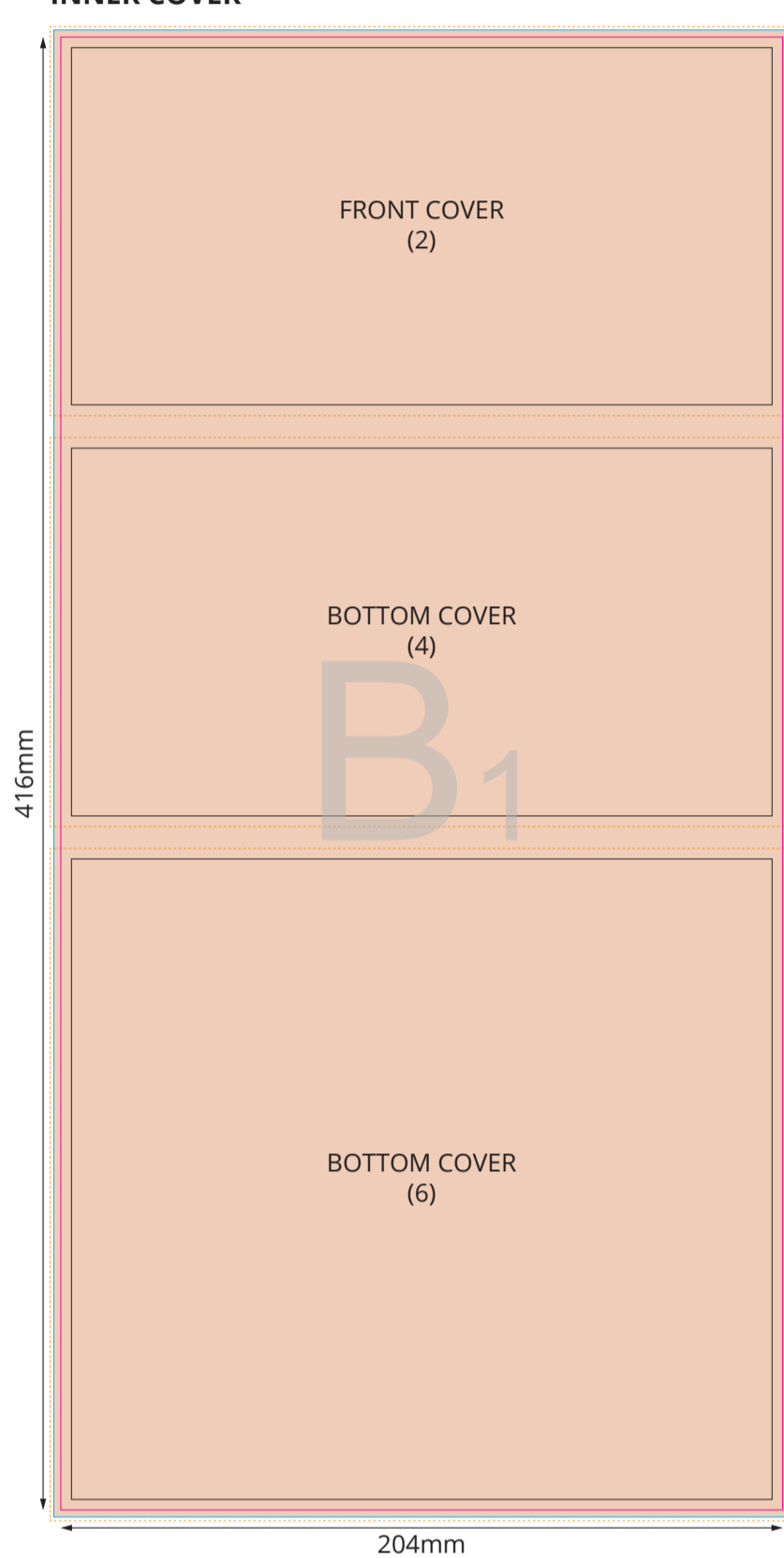


FOLDED ITEM

## OUTER COVER

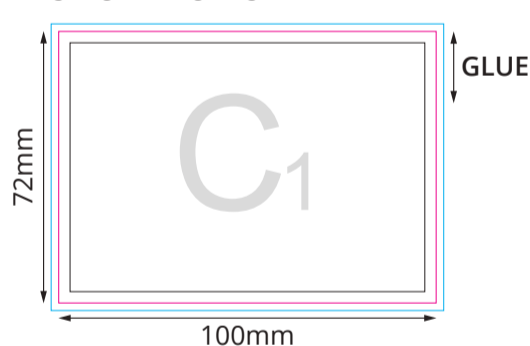


## INNER COVER

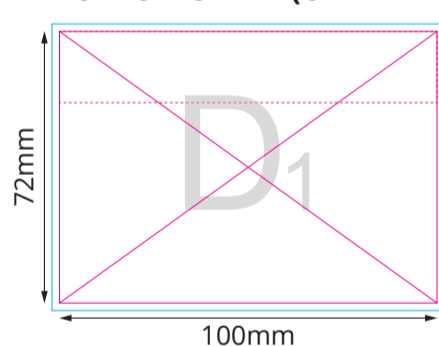


yourChoice

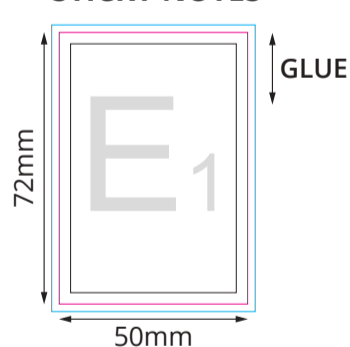
### STICKY NOTES



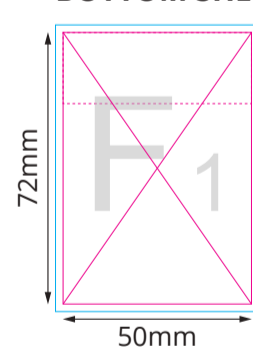
### BOTTOM SHEET (UNPRINTED)



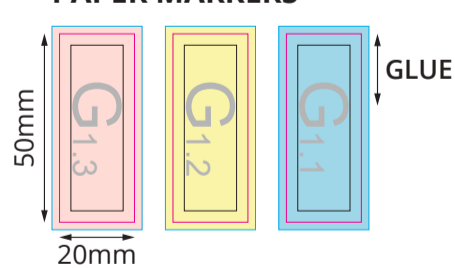
### STICKY NOTES



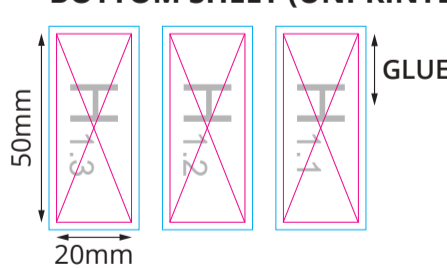
### BOTTOM SHEET (UNPRINTED)



### PAPER MARKERS



### BOTTOM SHEET (UNPRINTED)



### CALENDAR SHEETS - BACK



### CALENDAR SHEETS - FRONT



### Key:

- Finished component size
- Bleed area. In case of bleed imprint, please extend it until blue line
- Safe print area. Keep all important text and graphics within this area
- Solid board
- Edge of solid board

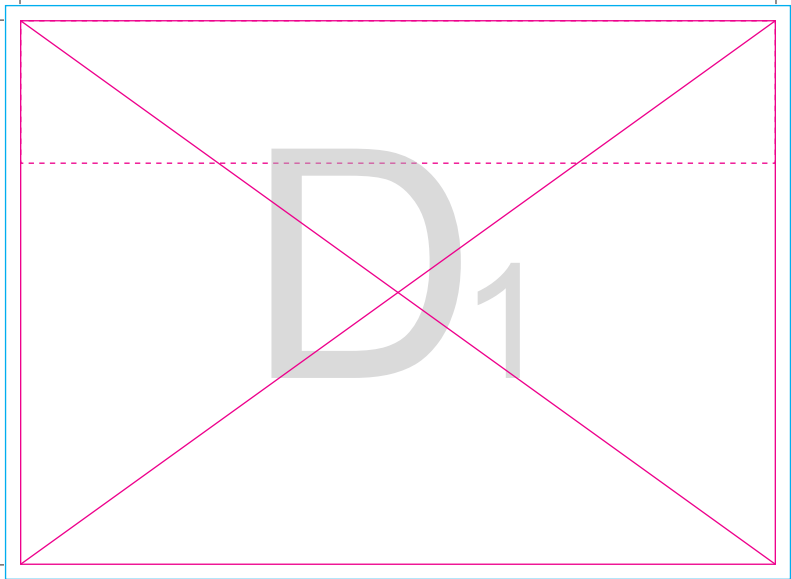


A<sub>1</sub>

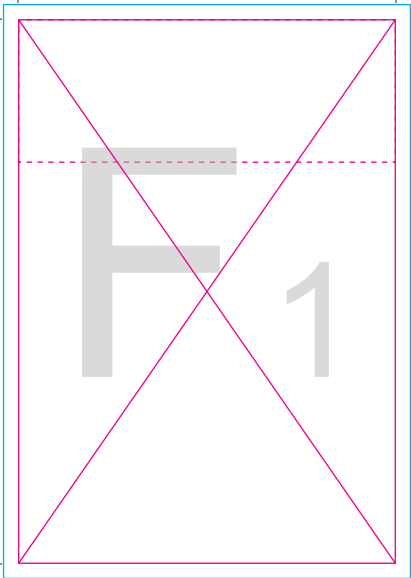
B<sub>1</sub>



C<sub>1</sub>



E 1

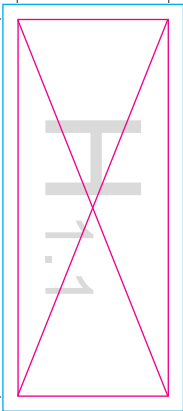


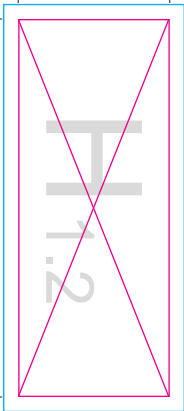
G1.1

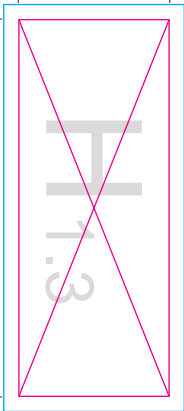


G  
J  
1.  
2

G  
1.3







1.1.1

12.1

1.2



12.2

1.3

1.2.3

1.4

12.4

1.5

| 2.5

1.6



12.6

1.7

12.7

1.8

12.8

1.9

12.9

| 1.10



| 2.10

1.11

| 2.11

| 1.12

| 2.12